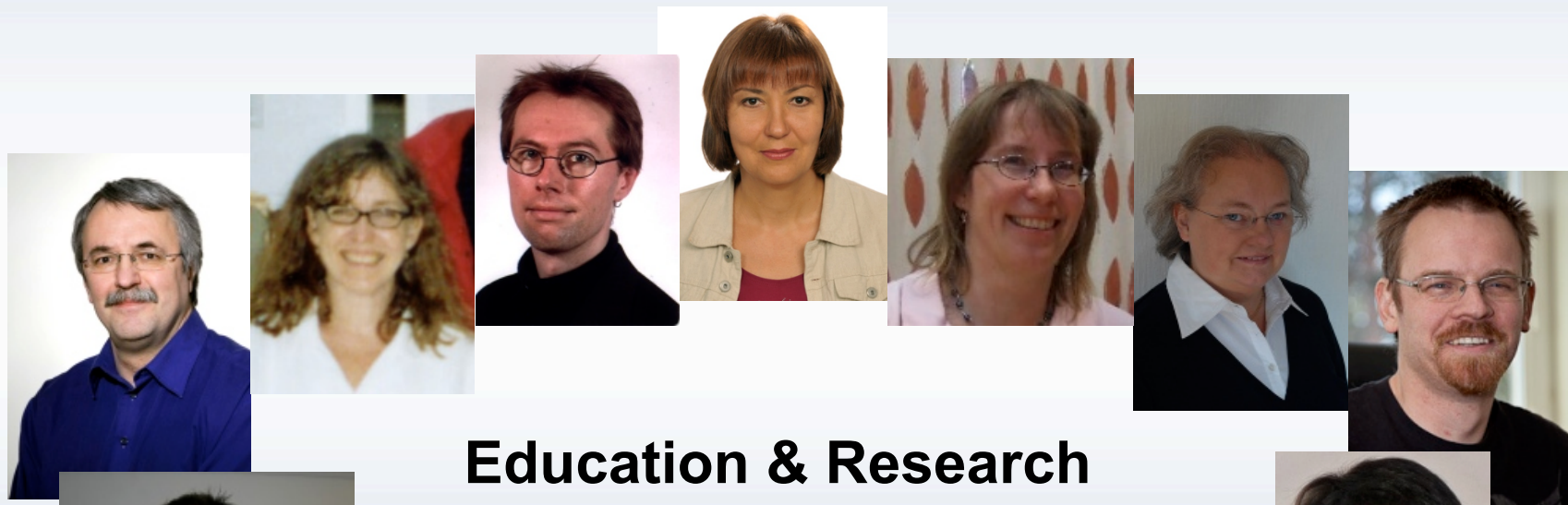


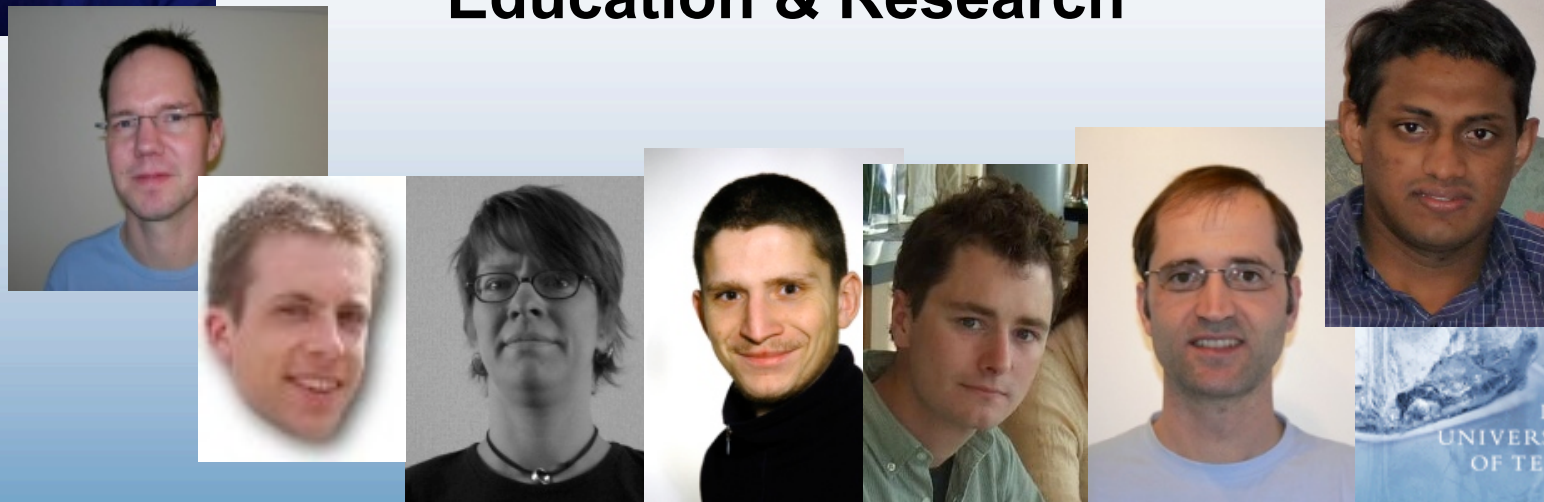
# Department of Computer Science, Electrical and Space Engineering

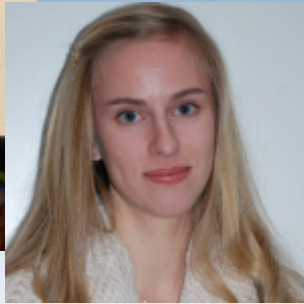
## Division of Space Technology

Head : Dr. Victoria Barabash

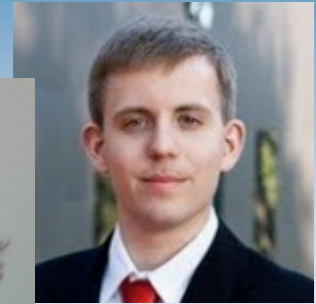
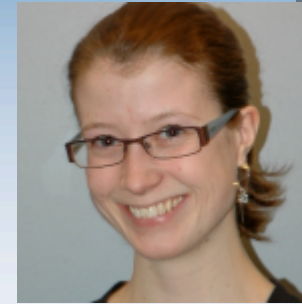


## Education & Research





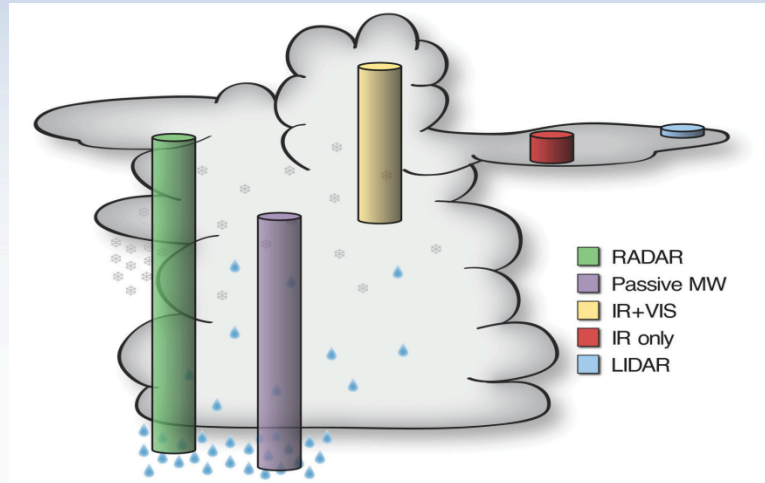
## Education



1. Erasmus Mundus Master in Space Science and Technology - SpaceMaster, 120 ECTS (2 years)
2. Civil Engineering Programme in Space Technology, 300 ECTS (4-5 years)  
2.5 years in Luleå, 1.5 (2.5) years in Kiruna
  - Spacecraft and Instruments
  - Space and Atmospheric Physics
  - Aero Engineering
3. International Master in Spacecraft Design, 120 ECTS
4. International Master in Earth Atmosphere and Solar System, 120 ECTS
5. Swedish National Graduate School in Space Technology

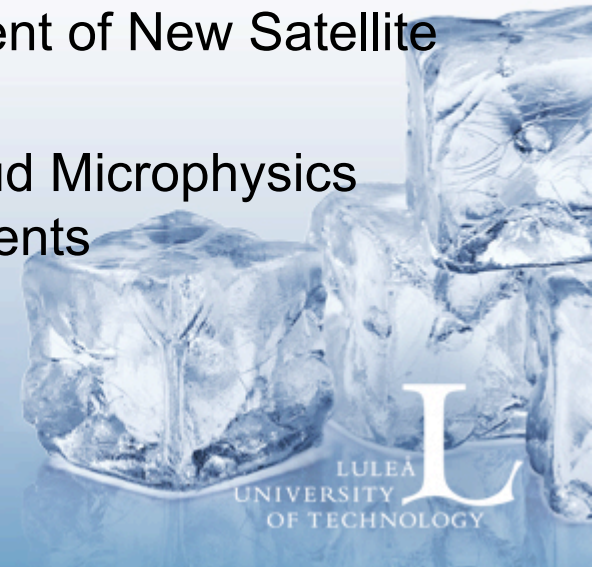
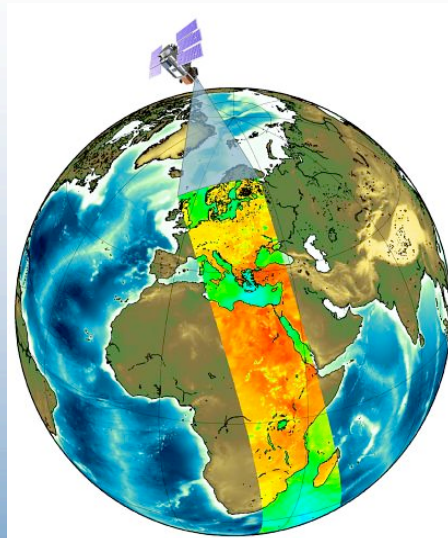


# Current Research



To get an improved understanding of the atmosphere and the climate system with the help of satellite data:

- Radiative Transfer
- Humidity and Cloud Research
- Development of New Satellite Sensors
- In situ Cloud Microphysics Measurements





Luleå University of Technology expands

# Chaired Professor

## in Onboard Space Systems

Applications are invited for the Chaired Professor in Onboard Space Systems at the Department of Computer Science, Electrical and Space Engineering, Division of Space Technology in Kiruna.

The successful candidate will have an outstanding research record in space system technology and will be of internationally recognized stature in the field. Onboard space systems include systems for control, instrumentation and communication in the upper atmosphere and space. Of particular importance are reliable, radiation resistant low-power electronic systems and miniaturization of these.

The candidate will be expected to pursue research programs at the forefront of the subject, and to contribute to graduate and postgraduate teaching, including lecturing, examining and postgraduate supervision.

Deadline for applications: 31 May 2013, ref no 467-13

For more details about the position and full application instructions,  
**see <http://www.ltu.se/org/srt/Jobs>**

Contact: Jonas Ekman, Head of department  
0920-49 28 28, [jonas.ekman@ltu.se](mailto:jonas.ekman@ltu.se)

LULEÅ UNIVERSITY OF TECHNOLOGY is experiencing strong growth with world-leading competence in several areas of research. Our research is conducted in close cooperation with companies such as Bosch, Ericsson, Scania, LKAB, SKF and leading international universities.

Luleå University of Technology has a total turnover of SEK 1.5 billion per year. We currently have 1,600 employees and 20,000 students.



LULEÅ  
TEKNISKA  
UNIVERSITET